



MAY 15 2025 | DENVER
RESILIENCE SUMMIT

SHORING UP THE FUTURE

Policies and Plans Advancing Resilience in the Bay Area and Beyond



Shoring Up the Future:
Policies and Plans Advancing
Resilience in the Bay Area
and Beyond







Planning Across the Bay Area

Risk of Coastal Inundation

PERMANENT INUNDATION FROM SEA LEVEL RISE



SEA LEVEL RISE ADAPTATION PLANNING FOR MARIN COUNTY'S TRANSPORTATION SYSTEM

FINAL REPORT DRAFT - APRIL 2025



TRANSPORTATION AUTHORITY OF MARIN



Planning Policy Guidance
To Protect and Enhance
Bay Shoreline Areas of San Mateo County
June 2023

Regional Shoreline Adaptation Plan:

One Bay Vision,
Strategic Regional Priorities,
and Subregional Shoreline
Adaptation Plan Guidelines

December 2024

Oneshoreline Priorities



POLICY GUIDANCE



PROJECTS



FLOOD EARLY WARNING

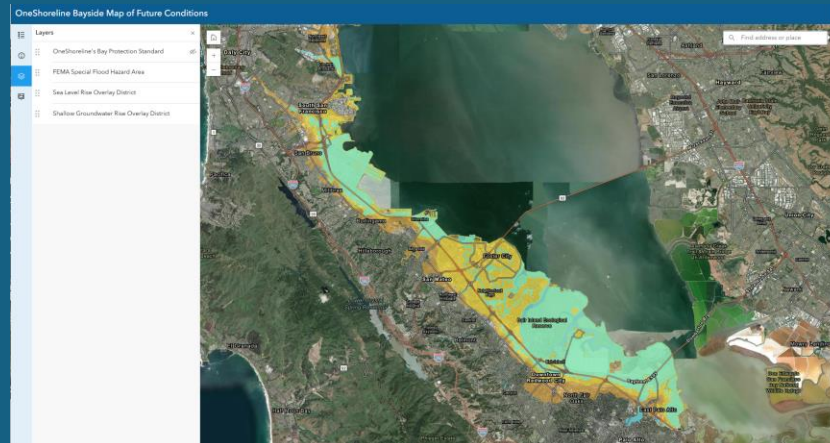


FUNDING

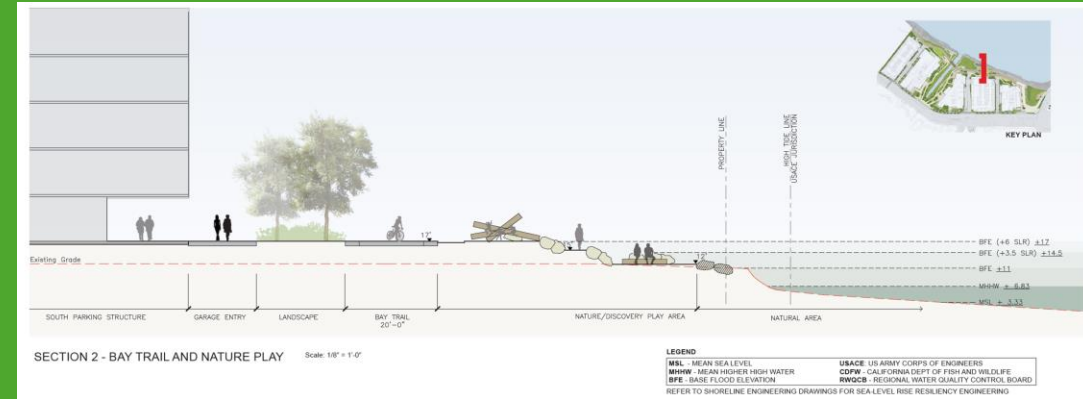


Planning Policy Guidance

- Buffer Zones along the Bay and creeks
- Shoreline protection infrastructure
- Elevating development
- Stormwater capture and drainage
- Shallow groundwater rise
- Applicability and exceptions



Example Development Incorporating PPG



Links to Resources

- BCDP's Regional Shoreline Adaptation Plan:
<https://www.bcdc.ca.gov/local-sea-level-rise-plans/>
- OneShoreline's Planning Policy Guidance:
<https://oneshoreline.org/planning-guidance/>
- Burlingame Sea Level Rise Ordinance:
<https://www.burlingame.org/637/Sea-Level-Rise>
- TAM Sea Level Rise Study:
<https://www.tam.ca.gov/projects-programs/slr/>

Presented by
Janelle Kellman

Former Mayor,
City of Sausalito



Founder,
Center for Sea Rise Solutions

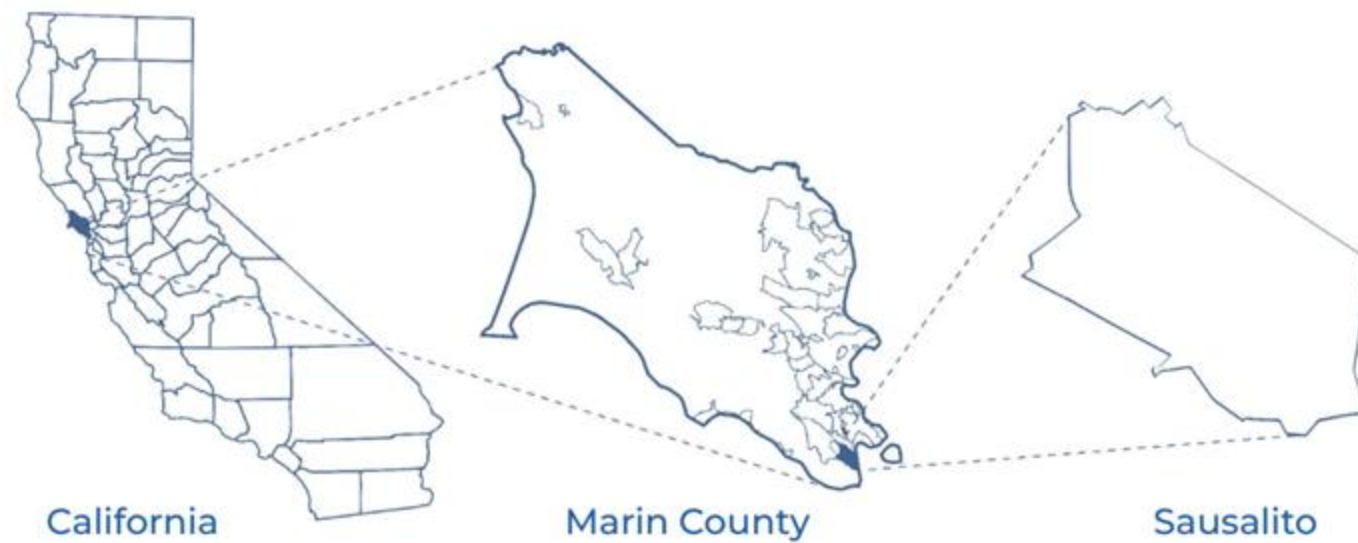
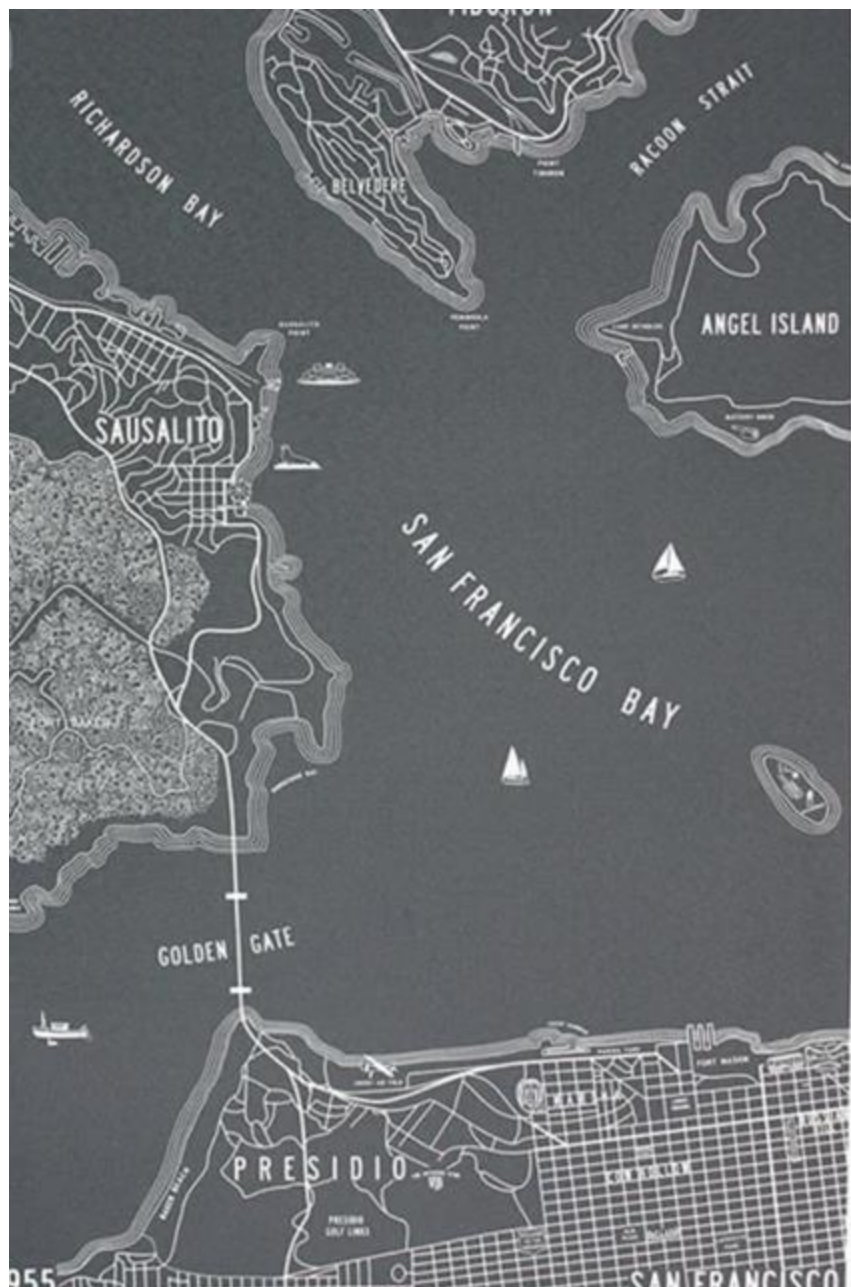


**Janelle
Kellman**

**for Lt.
Governor**



The floating home communities are crucial assets that demand a resilient adaptation strategy along the Sausalito shoreline.





1868 - Bustling Transportation Hub



Pre-WWII - Tidal Marshes



WWII - Marinship





Today - Working Waterfront



Center for
**SEA RISE
SOLUTIONS**

KEY CHALLENGES FACING SAUSALITO

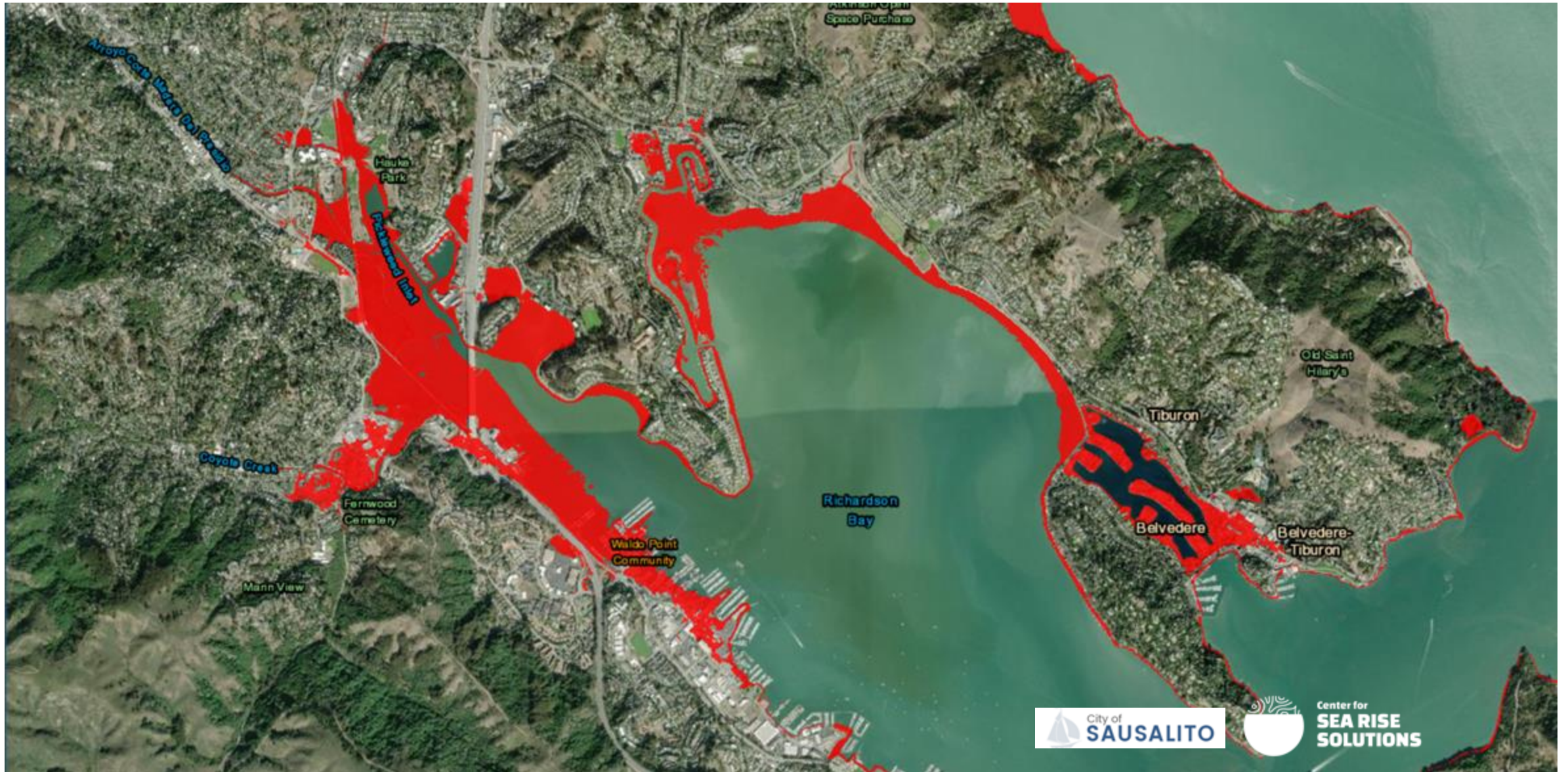
NOW AND IN THE COMING DECADES

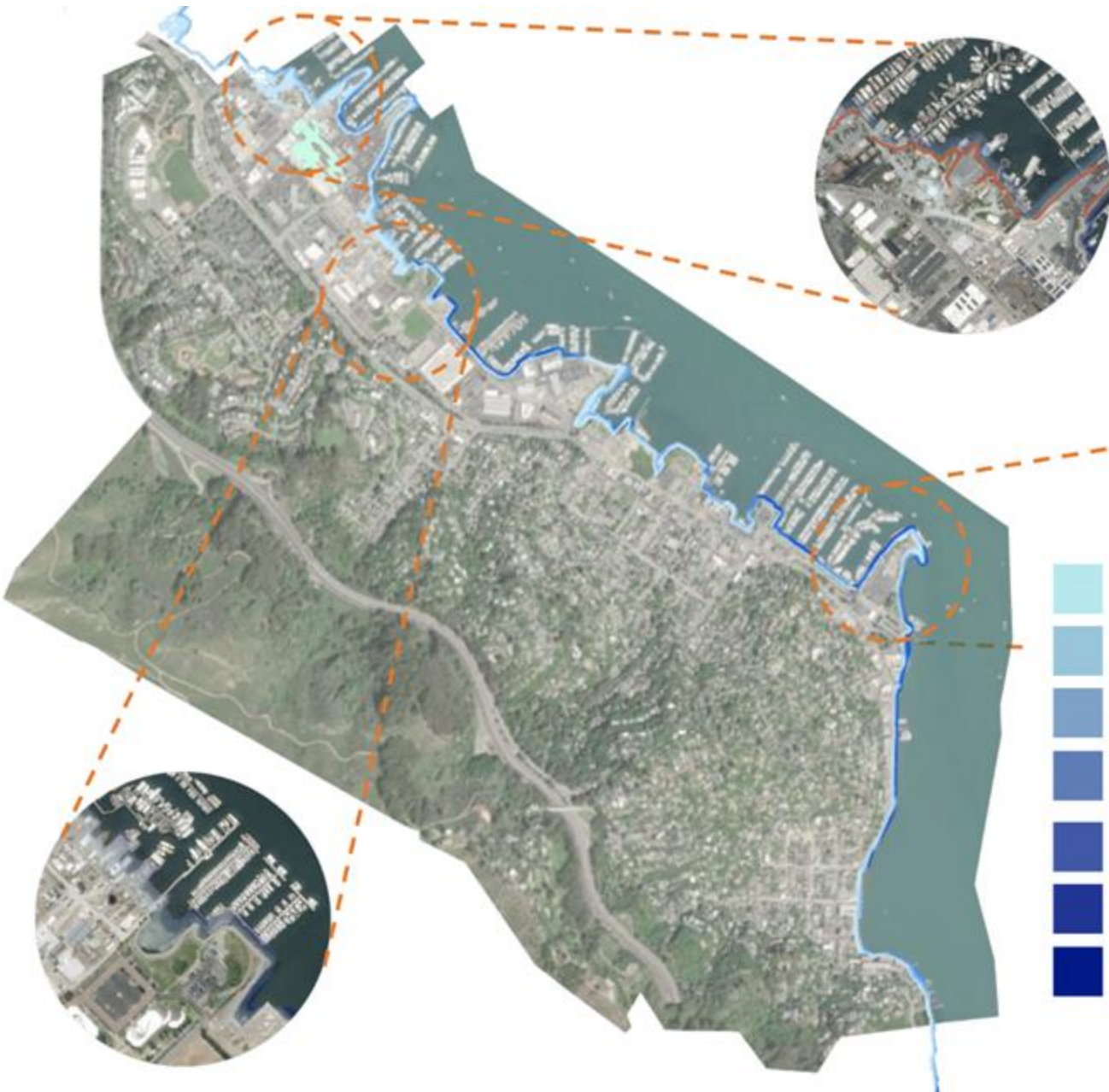
Sausalito Today

Infrastructure impacts:

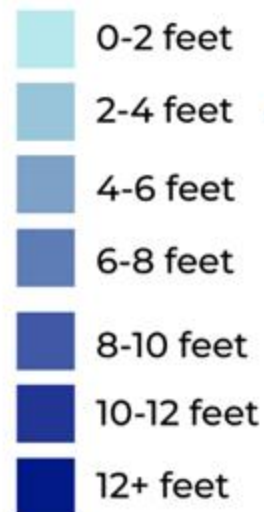
Destructive flooding and erosion will destroy homes, businesses, roads, sewer systems, stormwater drainage, and other infrastructure.







Sea level along the U.S. coastline is projected to rise, on average, 10 - 12 inches (0.25 - 0.30 meters) in the next 30 years (2020 - 2050), which will be as much as the rise measured over the last 100 years (1920 - 2020).
-NOAA



Sausalito, *March 2023*

**Key roadways threatened
by storm surge**

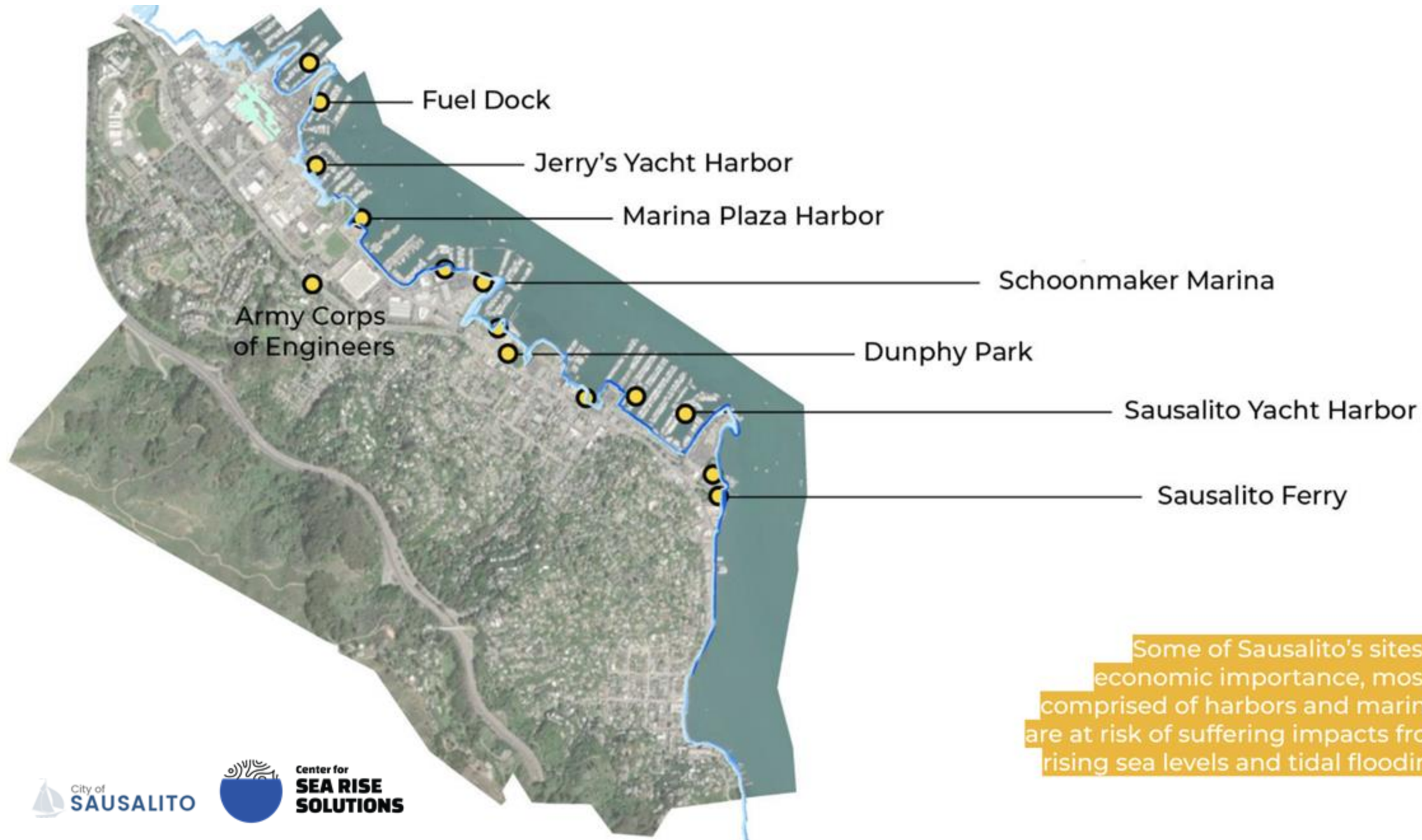


Christmas Week Flooding, Santa Cruz example

December 2023

**Far from an imagined
threat**





Critical infrastructure is at risk of climate-related and human induced disasters, such as high tides, heavy rain and mudslides.



- Walking Path
- Bike Lane
- Roads
- Bridgeway Pr.
- Transit Stops





Vision:

1. **Make Sausalito** and its key infrastructure points **more resilient** in the face of immediate and long-term threats of sea level rise,
2. **Reduce risk** by providing proactive measures, and
3. **Prioritize nature-based solutions** whenever possible

SHARE & WIN

Share your feedback on today's event and be entered to win a complimentary registration to the 2026 Resilience Summit!

