



Your webinar will begin shortly.

Members get more. Explore our expansive library of ULI content including our latest webinars, reports, case studies, reading lists, and more. **Anytime. Anywhere.**

knowledge.uli.org

Beyond the Pandemic – The Importance of Social Value



This webinar will start 12:30pm (BST) / 1:30pm (CEST)

There is currently no audio playing



You can test your speakers by clicking on Audio Settings > Test Speaker & Microphone at the bottom of your screen



Questions can be submitted via the Q&A button at the bottom of your screen. There is the option to send questions anonymously if you would prefer

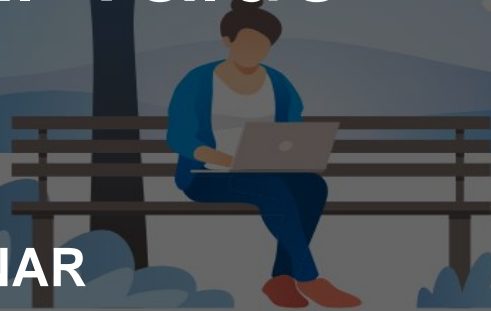


This webinar is CPD accredited

Beyond the Pandemic – The Importance of Social Value

ULI WEBINAR

27 MAY 2020



Beyond the Pandemic – The Importance of Social Value



Lisette van Doorn
CEO, ULI Europe



Dilip Khullar
Managing Director
Estabona Management



Richard Meier
Co-Founder, Stories



Christine Babkine
Director, Corporate Social
Responsibility
Ivanhoé Cambridge



Michele Giddens
Partner & Co-Founder
Bridges Fund Management



Thank you for attending the webinar.

An on-demand recording of this webinar will be available to members on Knowledge Finder soon.

knowledge.uli.org



This webinar is CPD accredited.

This webinar counts towards 1 hour of training and after completing the webinar you can request your 'Certificate of Attendance' directly through the [CPD Certification Service](#)



Members Get More | knowledge.uli.org

Upcoming ULI Europe Webinars

The Role of Technology in Managing Real Estate and Ensuring Health and Safety During a Pandemic

Wednesday 3 June at 12:30pm BST / 1:30pm CEST

Confronting the Pandemic and Beyond – Redefining City Resilience

Wednesday 10 June at 12:30pm BST / 1:30pm CEST