

A grayscale background image showing several pairs of hands in business attire reviewing documents on a table. The hands are positioned around the edges of the frame, with some holding pens, suggesting a collaborative meeting or review process.

# Confronting COVID-19: Healthy Building Certification Updates

Urban Land Institute | August 26, 2020



## URBAN LAND INSTITUTE

Provide leadership in the responsible use of land and in creating and sustaining thriving communities worldwide

## BUILDING HEALTHY PLACES

Leveraging the power of ULI's global networks to shape projects and places in ways that improve the health of people and communities



Convenings | Research | Best Practices | Education

## ULI Goals

### Help ULI members:

- Understand the role they can play in slowing the spread of the disease
- Gain business and planning insights for navigating the crisis
- Help promote equity and mitigate adverse impacts
- Help cities recover in ways that are equitable and enduringly resilient

[www.uli.org/covid19](http://www.uli.org/covid19)

Disclaimer: This webinar is provided for informational and educational purposes only. The views expressed are those of the speakers/presenters and are not necessarily endorsed by or reflect the policies or positions of ULI. The information provided is not intended to constitute medical or legal advice and should not be taken as such. For specific medical advice, consult your physician, and for legal advice, consult your attorney.

**ULI does not warrant the accuracy or completeness of any information provided and assumes no responsibility for any injury or damage to persons or property arising out of or related to any use of the information provided in this webinar.**

# Upcoming Confronting COVID-19 Webinars

~ Webinars are being recorded. A recording of this webinar will be posted on the web in Knowledge Finder and a link will be shared with registrants~

Join us for virtual Fall Meeting programming

Find information from past ULI webinars on Knowledge Finder at [knowledge.uli.org](https://knowledge.uli.org)

[www.uli.org/covid19](https://www.uli.org/covid19)

[health@uli.org](mailto:health@uli.org)



# Speakers: Healthy Building Certification Updates



**Marta Schantz**  
**(Moderator)**

Senior Vice President  
ULI Greenprint Center for  
Building Performance,  
Urban Land Institute



**Joanna Frank**

President & CEO  
Center for Active Design



**Jessica Cooper**

Chief Commercial  
Office  
International  
WELL Building  
Institute



**Renee Loveland**

Director of  
Sustainability  
Gerding Edlen  
Investment  
Management



**Laura Craft**

Head of Global  
ESG Strategy  
Heitman

# Healthy Building Certification Updates for COVID





**Joanna Frank**  
President & CEO  
Center for Active Design

# Fitwel's Viral Response Module



August 26, 2020

The Center for Active Design

FITWEL & Design is a registered trademark of the U.S. Department of Health & Human Services (HHS).  
Participation by The Center for Active Design and/or any other organization does not imply endorsement by HHS.

© Center for Active Design, 2020







CENTER  
FOR ACTIVE  
DESIGN

**The Center for Active Design (CfAD)** is the leading international non-profit organization that advances design strategies to foster healthy and engaged communities.


**FITWEL CHAMPION**  
**Tishman Speyer**

Industry Advisor, Fitwel Viral Response Module



**New York, NY**  
Photo Courtesy of  
Tishman Speyer



A photograph of a modern building at dusk, with a dark blue overlay containing white text. The building features a prominent glass facade and a curved architectural element. The text is centered and reads: "Fitwel has a vision for a healthier future where **every building** is enhanced to support the wellbeing of its occupants, and support healthy communities".

Fitwel has a vision for a healthier future  
where **every building** is enhanced to support  
the wellbeing of its occupants, and support  
healthy communities

A photograph of a modern building at dusk, showing a glass facade and a curved architectural element. The building is illuminated from within, and the sky is dark. The text is located in the bottom right corner of the image.

The Center for Disease Control and Prevention  
Atlanta, Georgia, U.S Photo Courtesy of Perkins+Will

# Fitwel's response to the COVID 19 pandemic

There is a collective and heightened awareness of the link between health and the built environment due to COVID-19

Need for a credible, and science-based standard for the real estate industry to broadly adopt in response to stakeholders and manage risks presented by the current pandemic



**FITWEL CHAMPION**  
**QuadReal**

Industry Advisor, Fitwel Viral Response Module

**Commerce Court**  
Photo Courtesy of QuadReal





# The Fitwel Viral Response (VR) Module

Provides **annual, third-party certification** of policies and practices informed by the latest public health research on mitigating the spread of infectious diseases within buildings.

FITWEL CHAMPION  
**Triovest**

Industry Advisor, Fitwel Viral Response Module



Photo Courtesy of Triovest



# Module Development

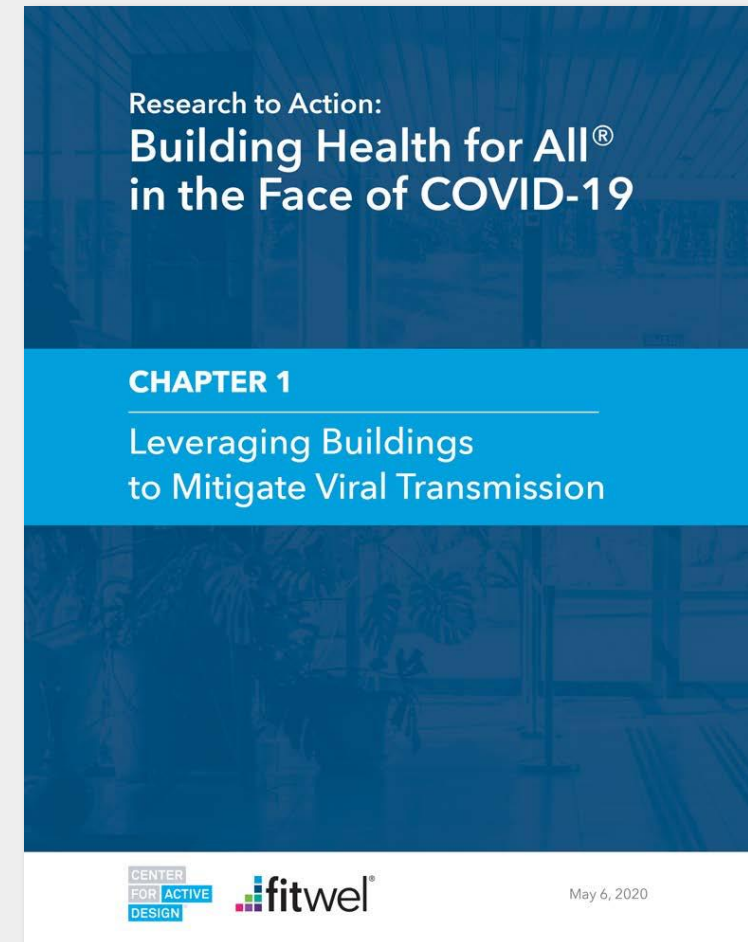
---

The module builds upon and operationalizes **Fitwel's Research to Action** series, published in May 2020.

This publication brings together the body of evidence around mitigating viral disease including influenza and SARs, with emerging evidence related to COVID-19.

---

[Download for free at fitwel.org](https://fitwel.org)



# Industry Advisors

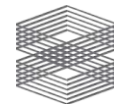
---

Prototyped in conjunction with eight leading companies who own, manage or lease large portfolio's of real estate, and represent a diversity of asset classes, geographies, and industries to ensure the VR module is broadly applicable and scalable

**HARRISON STREET**  
*Real Estate Capital*



**VORNADO**  
REALTY TRUST



TISHMAN SPEYER

# Academic Advisors

---

Strategies drafted in partnership with leading health experts from the fields of public health, infectious disease, mental health, and behavioral psychology

**Andrew Dannenberg**, University of Washington

**Bon Ku**, Thomas Jefferson University

**Brett C. Singer**, Lawrence Berkeley National Lab

**David A. Turcotte**, UMass Lowell

**Ed Nardell**, Harvard T.H. Chan School of Public Health

**Edith Parker**, University of Iowa

**Elizabeth Garland**, Icahn School of Medicine

**Lidia Morawska**, Queensland University of Technology

**Piers MacNaughton**, Harvard T.H. Chan School of Public Health

**Rachel Lynn Golden**, Columbia University Irving Medical Center

**Richard Vincent**, Icahn School of Medicine

**Setha Low**, CUNY Graduate Center

**Terry T-K Huang**, City University of New York





The **Fitwel Viral Response Module** covers the following topic areas:

→ **Enhance Indoor Environments**

→ **Encourage Behavioral Change**

→ **Build Occupant Trust**



# Enhance Indoor Environment

---

## 1.1 Establish an Enhanced Indoor Air Quality Policy (MR)

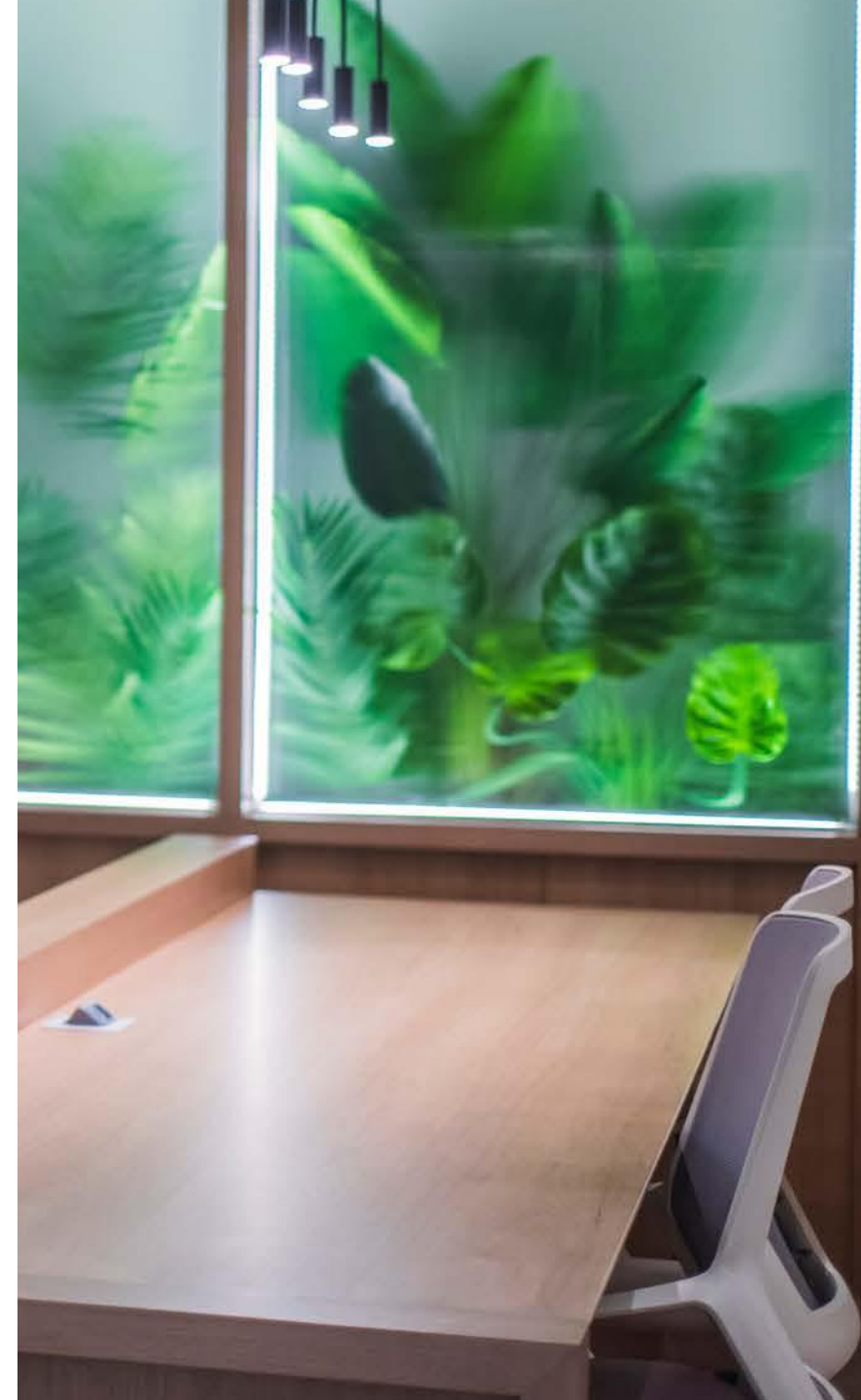
1.1.1 Establish a Humidity Control Policy (DS)

1.2 Establish an Enhanced Indoor Air Quality Testing and Monitoring Protocol

1.3 Establish a Legionella Water Management Plan

## 1.4 Establish Enhanced Cleaning, Disinfecting, & Maintenance Protocol (MR)

1.4.1 Establish an Enhanced Green Purchasing Policy (DS)



# Encourage Behavioral Change

---

2.1 Establish a Plan for Surface Hygiene Stations

**2.2 Establish Personal Protective Equipment (PPE) Guidelines (MR)**

2.2.1 Establish a Personal Protective Equipment (PPE) Provision Plan (DS)

**2.3 Support Hand Hygiene (MR)**

**2.4 Provide Select Educational Health Promotion Signage (MR)**

2.5 Establish a Specialized Health Programming and Services Plan

2.5.1 Establish Social Support Groups (DS)



# Build Occupant Trust

---

## 3.1 Establish a Contagious Disease Outbreak Preparedness Plan (MR)

3.1.1 Establish a Business Continuity Plan (DS)

3.1.2 Establish a Mental Health First Aid Responder Plan (DS)

3.1.3 Establish Viral Response Design Guidelines (DS)

3.2 Establish an Enhanced Stakeholder Engagement Plan

**3.3 Establish a Communication Plan (MR)**

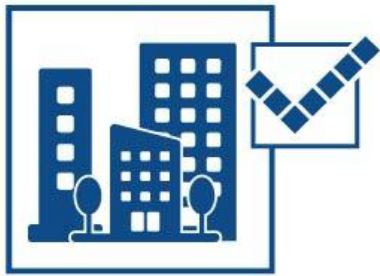
**3.4 Establish a Paid Sick leave Policy (MR)**

3.5 Establish a Family Support Policy



# Using the Fitwel Viral Response Module

The Viral Response module establishes a unique, multi-step process to help companies adopt rigorous viral, mitigation policies and practices aligned with the best available evidence to date and apply them at scale. It also serves as a natural entry point for advancing full project certification using a Fitwel Building Scorecard.



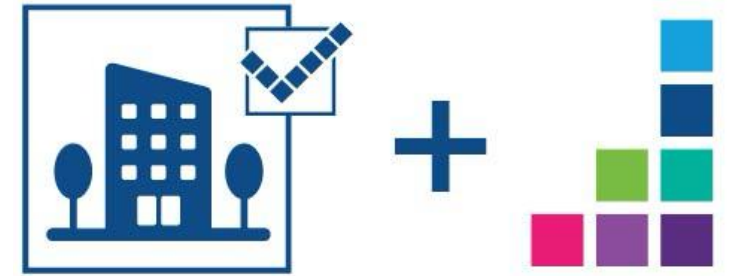
**Step 1**  
Viral Response Certification  
(Entity-wide policies and practices)

**Cost**  
**One-time Registration Fee: \$500**  
**Annual Certification Fee: \$3,500**



**Step 2**  
Viral Response Approval  
(Asset-level)

**Cost**  
**\$200 per asset**



**Step 3**  
Fitwel Building Certification  
(Asset-level)

**Cost**  
Visit [fitwel.org/certification](https://fitwel.org/certification) for details





# Viral Response Module

Flexible and scalable approach, allowing for use by a single asset, a diverse portfolio, or an entire company

Applicable to wide variety of commercial and residential assets

Includes Minimum Requirements to establish a consistent and multi-faceted approach

Fully integrated within Fitwel's online Portal and other Fitwel Building certifications

FITWEL CHAMPION  
**Harrison Street**

Industry Advisor, Fitwel Viral Response Module



**The Bristol at Garden City**  
Photo Courtesy of Harrison Street



# 500+ enrolled for Early Access

Early access starts today  
**August 26, 2020**

ahead of the general public release in mid-September.

To sign up for early access and learn more:  
**[www.fitwel.org/viral-response-module](http://www.fitwel.org/viral-response-module)**



**Jessica Cooper**

Chief Commercial Office

International WELL

Building Institute





Prioritize health and safety in a post-COVID-19 world with the third-party verified WELL Health-Safety Rating





# BETTER BUILDINGS ARE **WELL**



## OUR STANDARD

The premier global standard for healthy buildings.



## YOUR COMMUNITY

Join the movement with the WELL AP credential and IWBI Membership program.

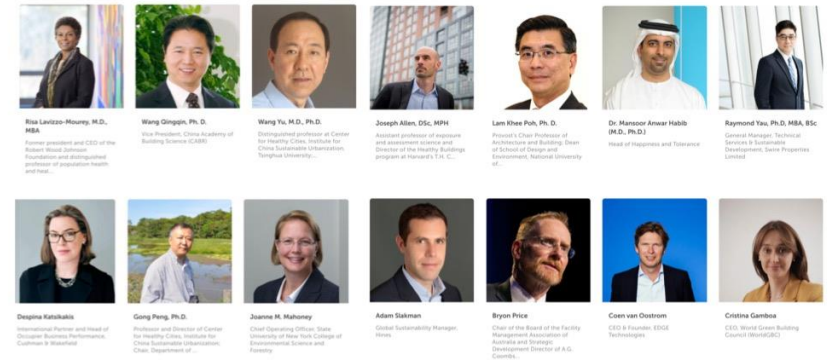


# EVIDENCE-BASED APPROACH TO HELP SUPPORT SPACES THAT ADVANCE HEALTH AND SAFETY

## IWBI TASK FORCE

On COVID-19 & Other Respiratory Infections: Prevention and Preparedness, Resilience and Recovery

The genesis of the rating was feedback from the **IWBI Task Force on COVID-19**, a group of nearly 600 public health experts, virologists, government officials, academics, business leaders, architects, designers, building scientists and real estate professionals established in late March 2020 to inform IWBI's response to the pandemic.



## INSTITUTIONAL KNOWLEDGE

Guidance on the spread of COVID-19 and other respiratory diseases developed by the World Health Organization (WHO), U.S. Centers for Disease Control and Prevention (CDC), global disease control and prevention centers, emergency management agencies, recognized standard-making associations, and leading academic and research institutions.

## WELL BUILDING STANDARD

A sub-set of evidence-based strategies, adapted for facilities operations and management, from the WELL Building Standard

## WELL ADVISORIES

Industry experts and researchers across the WELL Concept Advisories, the WELL Research Advisory, the WELL Advisory for Sports and Entertainment Venues, the WELL Advisory for Hotels and Resorts and the WELL Airport Advisory also provided extensive insights





The **WELL Health-Safety Rating** is an evidence-based, third-party verified rating focused on operational policies, maintenance protocols, emergency plans, and stakeholder education and engagement to address a post-COVID-19 environment now and broader health and safety-related issues into the future.



**Cleaning & Sanitization Protocols**



**Emergency Preparedness Programs**



**Health Service Resources**



**Air & Water Quality Management**



**Stakeholder Education and Engagement**

# WELL HEALTH-SAFETY RATING: **REOPEN WITH CONFIDENCE**



**FLEXIBLE**: Applicable for large and small organizations alike across all facility types. Users can pursue the strategies that reflect their specific needs and goals, with the option to adjust their approach at each annual renewal.



**SCALABLE**: Provides a framework for helping organizations to efficiently develop, implement and validate health and safety protocols and plans across multiple properties with streamlined documentation pathways and scalable pricing.



**VERIFIED**: Anchored in third-party document review and annual verification of policies, protocols and strategies through Green Business Certification Inc. (GBCI), instilling confidence in an organization's stakeholders.



**ACCESSIBLE**: Priced for accessibility, with a focus on interventions that require little to no capital expenditure.



# YOUR WELL HEALTH-SAFETY JOURNEY



## Enroll

Review the criteria and sign up to pursue the WELL Health-Safety Rating.



## Customize Your Approach

Select the features that are relevant to your project.



## Review

Upload documentation for third-party review by GBCI to confirm you've successfully met the feature-specific intent and requirements.



## Achieve

Earn the WELL Health-Safety Rating and promote your achievement.



## Renew

Apply for your annual seal to demonstrate ongoing commitment to upholding operational policies, maintenance protocols, emergency plans and stakeholder engagement.

# SCALABLE PRICING

A pricing model built to meet the needs of your organization or facility—no matter the size or type. Market, sector and IWBI Membership discounts apply.

<p><b>Small business</b></p> <p><b>\$2,730 USD</b></p> <p>Small businesses with less than 50 employees and less than \$10 million in revenue and less than 5 locations.</p>	<p><b>Standard</b></p> <p><b>\$4,200 USD</b></p> <p>Individual spaces/buildings not yet registered to pursue WELL Certification or subscribed in the WELL Portfolio program.</p> <p><i>WELL Health-Safety is included for registered projects submitting with certification documentation. Price is \$2500 for registered or certified projects submitting separately.</i></p>	<p><b>High Volume, Multi-Use</b></p> <p><b>\$12,600 USD</b></p> <p>High-volume locations are designed to accommodate more than 10,000 people daily and provide four or more distinct uses, such as retail, dining, entertainment, residential, lodging, offices, etc.</p> <p><i>Examples: stadiums, large hotel complexes, airports and shopping centers.</i></p>	<p><b>Multiple Projects</b></p> <p><b>*\$400 USD</b></p> <p>Multiple projects with a single owner and payer that share the same space type qualify for pricing efficiencies achieved when applying streamlined and consolidated documentation.</p> <p><i>*published pricing as low as \$400/location. Contact us for pricing for more than 415 facilities.</i></p>
---	--	---	--

# APPLICABLE FOR ANY FACILITY TYPE



**Sports & Entertainment**



**Movie Theaters**



**Hotels & Resorts**



**Restaurants**



**Offices**



**Education**



**Retail**



**Multifamily**



**Industrial**

# EARLY ADOPTERS

Meet some of the iconic buildings and leading organizations that have enrolled in the WELL Health-Safety Rating:

ACCIONA SA  
Adventist Health  
Aedifica  
Alpin Limited (Masdar City)  
American Savings Bank  
Bartra Capital Property  
CAMCO Management Co.  
Carrier  
Catalyst Partners  
CBD Z03  
CBRE Barcelona  
CBRE Madrid  
China Overseas Office Capital  
Cleveland Clinic Courts / Cleveland Cavaliers  
Climate Pledge Arena  
Community Investment Strategies, Inc  
CR Land  
Deerns  
Delos China  
Delos Living LLC  
Delta Electronics, Inc.  
Denholtz Properties  
Department of Earth System Science, Tsinghua University  
Empire State Realty Trust  
EMSI  
GFP Real Estate

Ghelamco Poland Sp. z o.o.  
Glenstar  
GuocoLand China Ltd.  
HBMSU  
Heitman  
Herman Miller Group  
Hornets Sports & Entertainment - Spectrum Center  
HRO  
Infancix Co., Ltd  
International Commerce Centre  
International WELL Building Institute PBC  
Ivanhoé Cambridge  
Jiahui Health  
JLL  
Karisma Hotels and Resorts  
Kilroy Realty Corporation  
Kimball  
Laguna  
Lendlease Australia Office Portfolios: Australian Prime Property Fund Commercial, Lendlease International Towers Sydney Trust and Lendlease One International Towers Sydney Trust  
Lincoln Property Company  
M Moser Associates  
Mace

Maple Leaf Sports & Entertainment (MLSE), which encompasses the Toronto Maple Leafs (NHL), Toronto Raptors (NBA), Toronto FC (MLS), & Toronto Argonauts (CFL)  
Menarco Development Corporation  
Milliken & Company  
ML7  
Montage International  
Moody Center  
National University of Singapore  
New Belmont Arena  
New York Yankees  
Oak View Group  
Out of the Box Ventures  
Overbury Morgan Lovell  
OVG Arena Alliance & Stadium Alliance  
OVG Facilities  
Pacers Sports & Entertainment: Bankers Life Fieldhouse (Indianapolis, Ind.)  
Pacers Sports & Entertainment: St. Vincent Center/Indiana Pacers Training Facility (Indianapolis, Ind.)  
Parmenter Realty Partners  
Phipps Conservatory and Botanical Gardens  
RMZ Corp  
Rocket Mortgage FieldHouse / Cleveland Cavaliers & Cleveland Monsters

Royal Albert Hall  
Rubrik India Pvt Ltd  
Savanna  
Serpentini Auto Group  
Shanghai Landleaf Architecture Technology Co. Ltd  
ShouGang Group  
Sino-Ocean  
Space Matrix Design Consultants Pvt. Ltd  
Spurs Sports & Entertainment  
TAIPEI 101 Tower  
Taiwan Architecture & Building Center  
Teknion  
The Florida Panthers and BB&T Center  
The Forestias  
The Related Group  
Thornton Tomasetti  
TITANIUM OFFICE SOLUTIONS MEXICO  
Uber Technologies, Inc.  
UltraStar Harrah's Ak Chin Resort Maricopa, Az.  
United Center  
Webster Bank Arena  
Wells Fargo Center, Philadelphia, Pa.  
Wolfgang Puck Fine Dining Group  
Woonerf Inc.  
Yuexiu Commercial

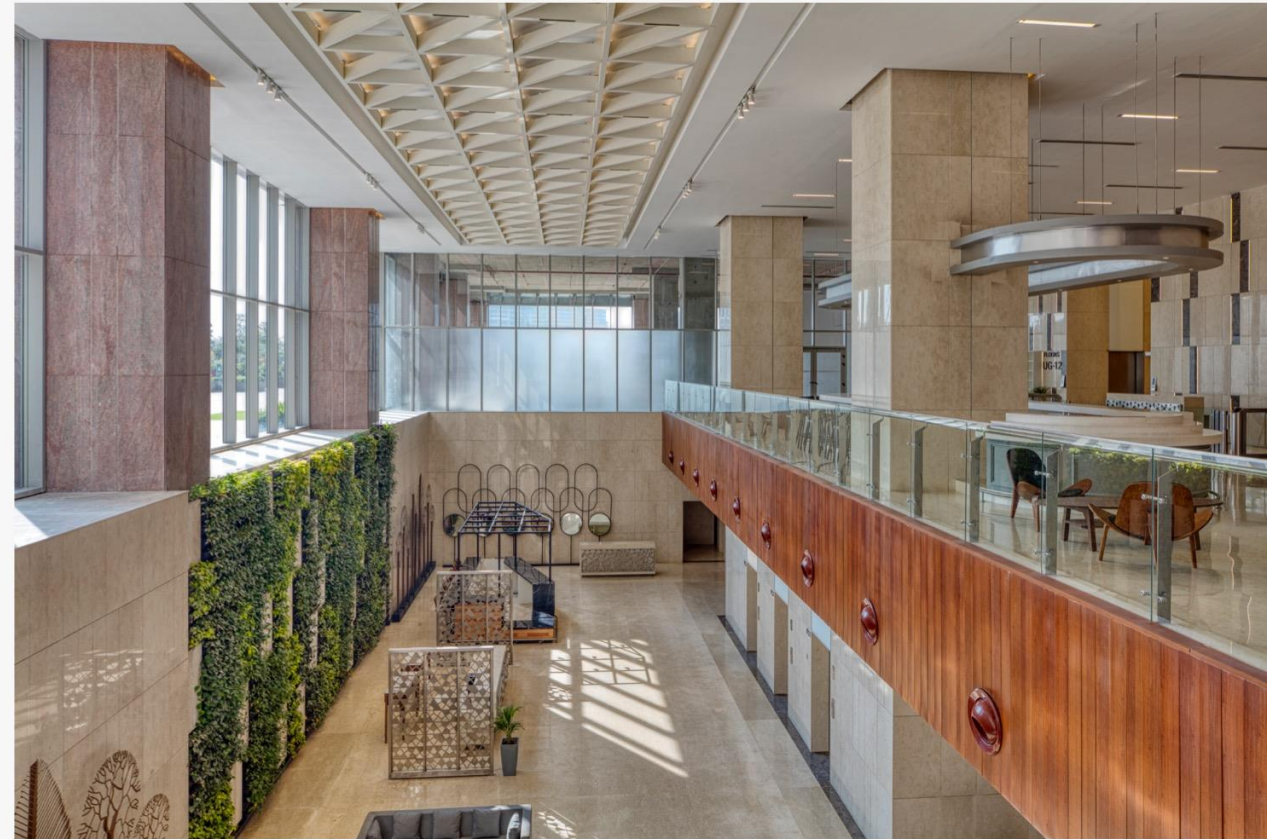




FUTURE OF SPACE™



*RMZ Ecoworld, Bangalore*



*The Skyview, Hyderabad*





*Menarco Tower, Manila*







*Yankee Stadium, New York*





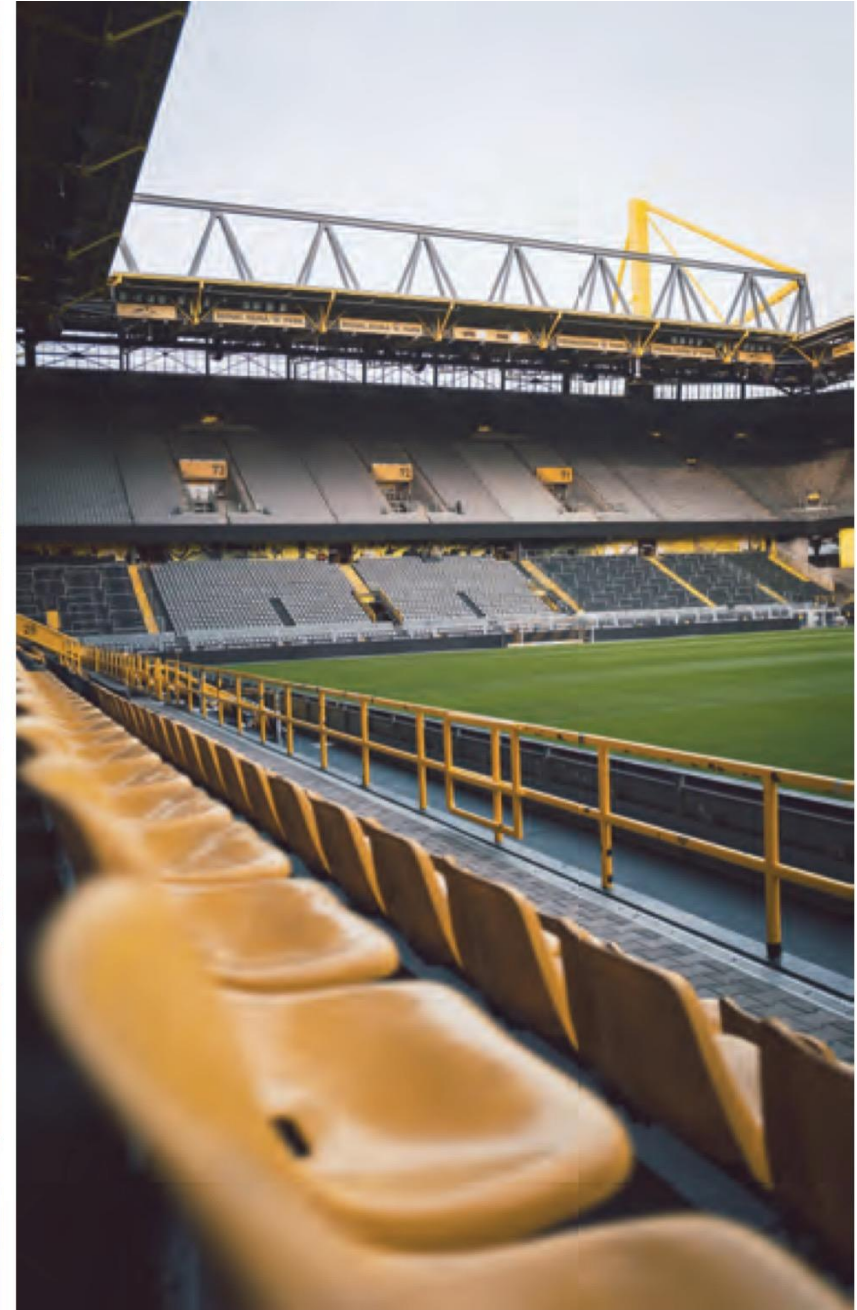
**100+**

Organizations



**500+**

Facilities

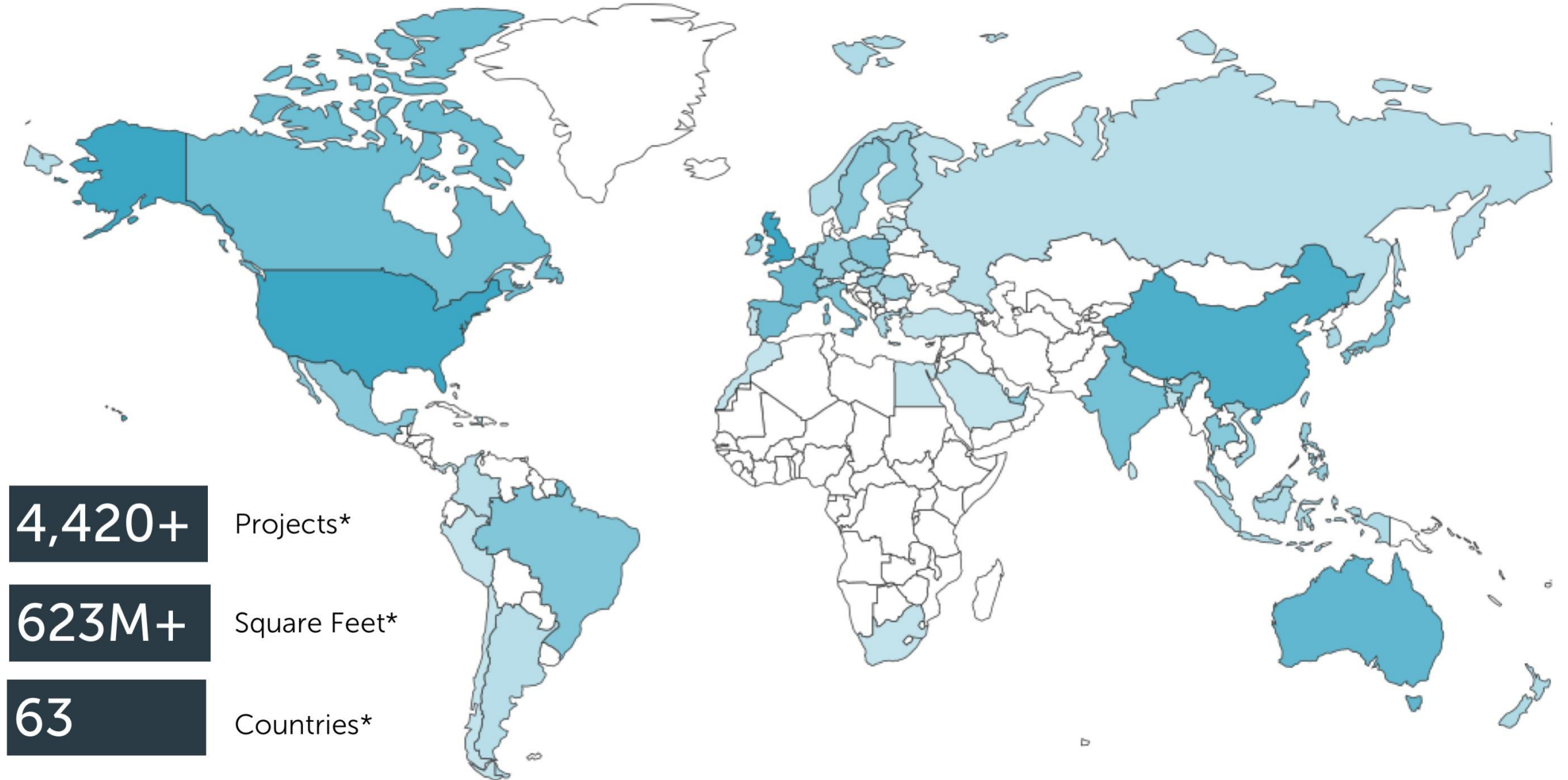


**185M+**

Square Feet



# WELL CERTIFICATION & WELL PORTFOLIO



4,420+

Projects\*

623M+

Square Feet\*

63

Countries\*

\*Includes WELL Certified, WELL Precertified and WELL registered projects, Excludes WELL Health-Safety Rating Projects

THE  
**WELL**  
BUILDING STANDARD

The leading tool for advancing  
health & well-being in buildings  
and communities globally.



**WELL  
HEALTH-SAFETY RATING**



**WELL  
CERTIFICATION**



**WELL  
PORTFOLIO**



# LOOK FOR THE SEAL



## Communicate to Build Confidence

The WELL Health-Safety seal can be placed on every space that has earned the rating as a visual mark to indicate the work an organization has done to apply measures mapped to scientific evidence that help to support the health of individuals in a post-COVID-19 world.





# Get in touch

[healthsafety@wellcertified.com](mailto:healthsafety@wellcertified.com)

[wellcertified.com/health-safety](https://wellcertified.com/health-safety)





## **Renee Loveland**

Director of Sustainability  
Gerding Edlen Investment  
Management



Gerding Edlen owns, operates, and develops properties that positively enhance our communities and planet.

- Deep commitment to health and wellness, community, and sustainability
- 3 Fitwel certifications
- 78 LEED certifications
- 4 Salmon Safe certifications
- Certified B Corp



# Health & Wellness

Shelter-in-place orders created profound changes in how we live and work.

A greater awareness and appreciation for the connection between health and the physical environment is emerging.

We believe properties that offer a higher standard of care for tenants will have market advantage.





# Health & Wellness

biophilic design

+

healthy lifestyle programming

=

healthier buildings & healthier people









































# COVID Priorities



- Ensure the **health and safety** of staff and residents
- **Stay informed** and be nimble
- **Protect** asset value
- **Reinforce** community

# Health and Wellness

## Resident Love Campaign

- Consistent and informative communications build trust in a time of uncertainty and evolving recommendations

## Suite of ongoing communications

- Reminders about building protocols
- Self-care resources
- Encourage support of local businesses
- Virtual events combined with in-person events following social distancing guidelines





# Health and Wellness

## System adjustments early on

- Ventilation
- Filtration
- Operable windows

## Evolving operations

- Cleaning
- Signage & sanitizing stations
- Social distancing guidelines
- Circulation
- Virtual leasing/self-guided tours
- Re-opening amenity spaces



# Health and Wellness

## Going forward

- Manage expenses & occupancy
- Balancing lifestyle expectations with COVID reality
- Evaluating Fitwel Viral Response Module
  - guidance
  - consistency
  - credibility
- Greater emphasis on resiliency planning





Thank you.





**Laura Craft**

Head of Global ESG Strategy

Heitman



- ULI Healthy Buildings

- August 2020

Laura Craft, Head of Global ESG Strategy

HEITMAN

A REAL ESTATE INVESTMENT MANAGEMENT FIRM

# Heitman: Real Estate Investment Management

## Investing Today with a Focus on Tomorrow.

Our investment process is guided by Environmental, Social and Governance (ESG) principles.



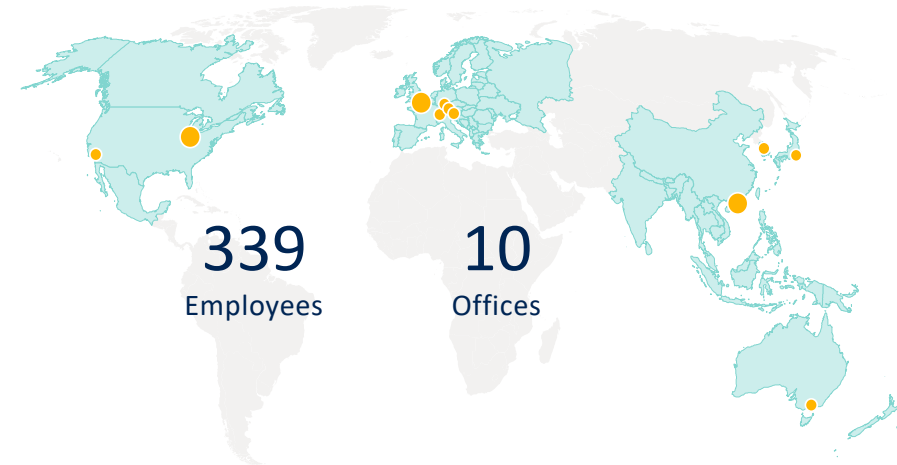
**\$35.4B**  
PRIVATE EQUITY



**\$3.9B**  
PRIVATE DEBT



**\$6.2B**  
PUBLIC EQUITY



- CHICAGO
- LOS ANGELES
- LONDON
- FRANKFURT
- LUXEMBOURG
- MUNICH
- HONG KONG
- MELBOURNE
- SEOUL
- TOKYO

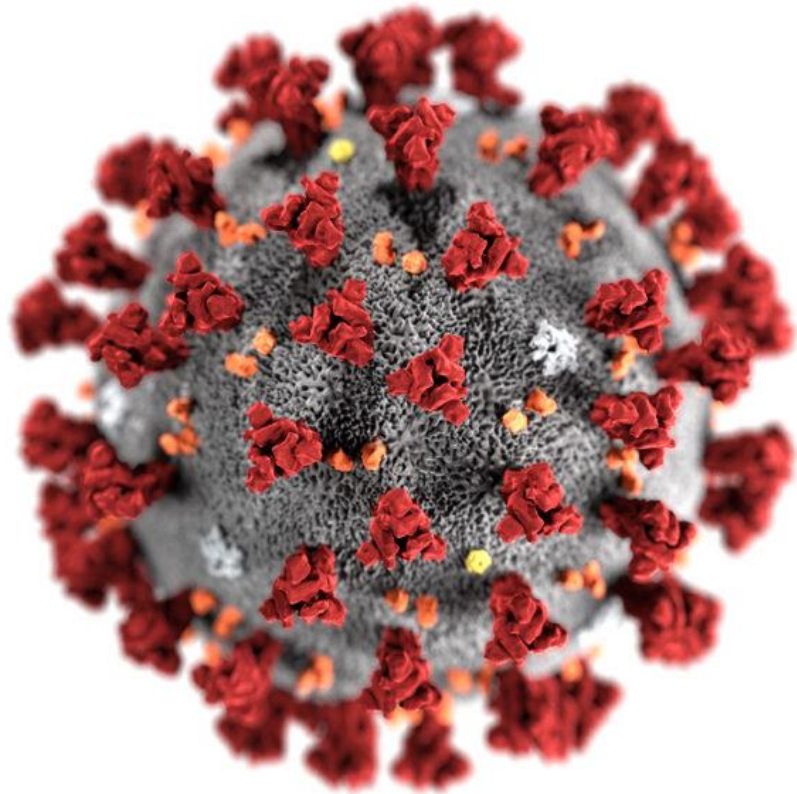


# ESG Defined for Heitman and Investments

	Heitman	Investments
<b>Environmental</b>	<ul style="list-style-type: none"> <li>- Heitman Environmental Footprint</li> <li>- Sustainable Office Practices</li> </ul>	<ul style="list-style-type: none"> <li>- Environmental and Climate Risk Assessments of Investments</li> <li>- Reduce Energy, Carbon, Water &amp; Waste</li> </ul>
<b>Social</b>	<ul style="list-style-type: none"> <li>- Diversity &amp; Inclusion</li> <li>- Health and Wellness Initiatives</li> <li>- Volunteer Activities</li> <li>- Community Engagement</li> </ul>	<ul style="list-style-type: none"> <li>- Social Evaluation of Partners &amp; Investments</li> <li>- Stakeholder Engagement &amp; Outreach</li> <li>- Enhance Health &amp; Safety</li> <li>- Enrich Quality of Life</li> </ul>
<b>Governance</b>	<ul style="list-style-type: none"> <li>- Compliance Team</li> <li>- Human Resources</li> <li>- ESG Committee</li> <li>- Employee ESG Forum</li> </ul>	<ul style="list-style-type: none"> <li>- Governance Screening of Partners &amp; Investments</li> <li>- ESG Policies and Guidelines</li> <li>- Integrated ESG Investment Approach</li> <li>- Investment Thought Leadership</li> </ul>



# Buildings Close in Response to COVID-19 Spread





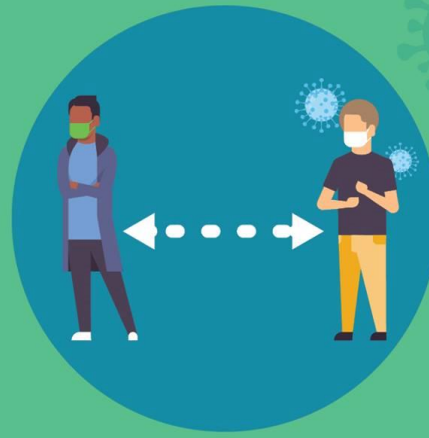
# The CDC Issues Recommendations

## SLOW THE SPREAD OF COVID-19

[cdc.gov/coronavirus](https://www.cdc.gov/coronavirus)



Wear a cloth face covering  
in public spaces



Stay at least 6 feet  
from other people

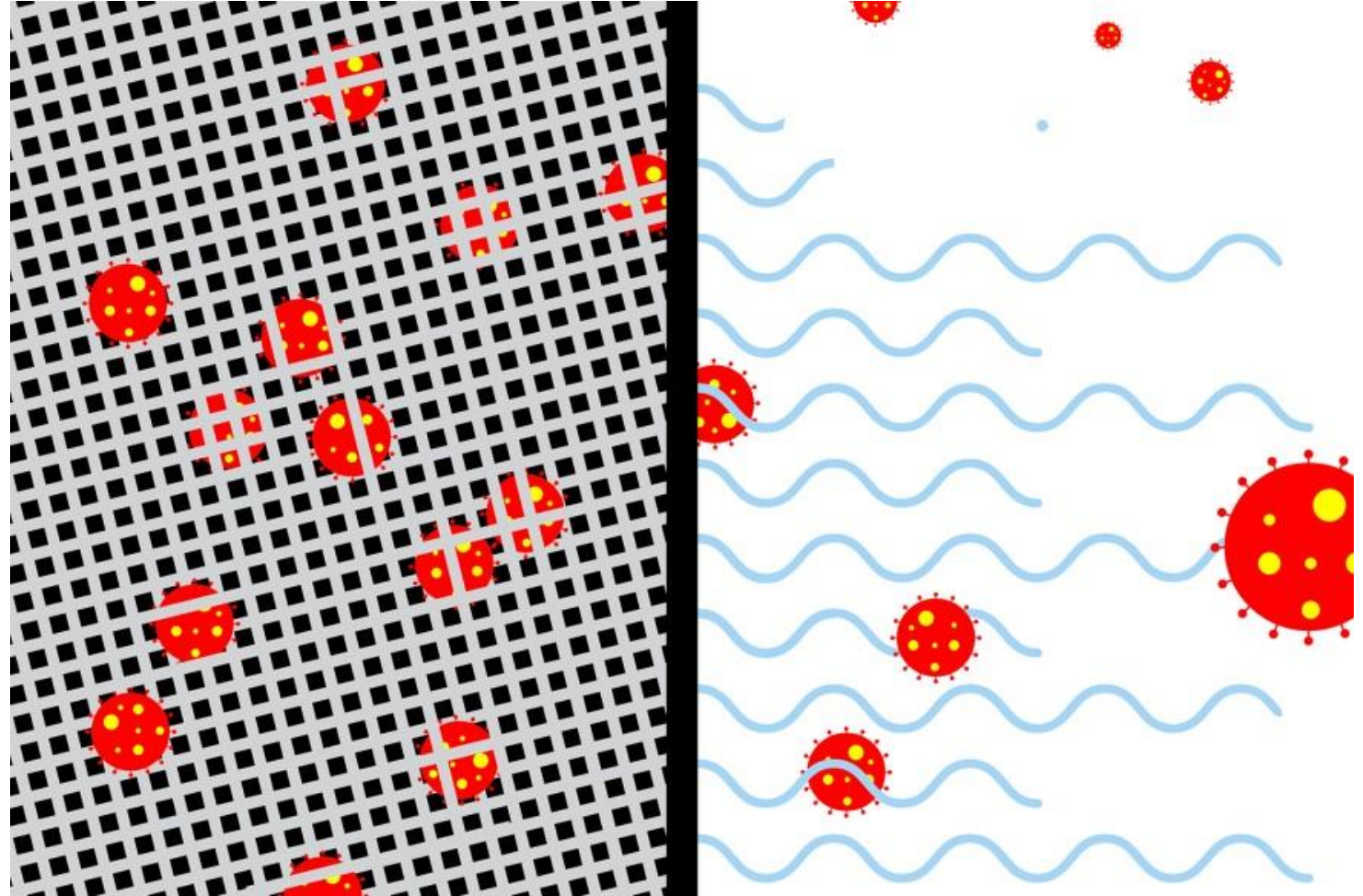


Frequently wash  
your hands

# As We Re-Open, Will Indoor Environments Be Safe?

The coronavirus spreads effectively via aerosols which raises concerns about the dangers of indoor air.

The risk of COVID-19 infection is between four and 19 times greater inside than outside, according to studies conducted in China and Japan.



[https://www.architectmagazine.com/design/an-open-and-shut-case-for-reducing-covid-19\\_o](https://www.architectmagazine.com/design/an-open-and-shut-case-for-reducing-covid-19_o)



# Healthy Building Certifications – Post COVID-19

- The WELL Health-Safety Rating for Facility Operations and Management is an evidence-based, third-party verified rating for all facility types, focused on operational policies, maintenance protocols, emergency plans and stakeholder education to address a post-COVID-19 environment now and broader health and safety-related issues into the future.



## Look for the seal

Designed to empower owners and operators across large and small businesses alike to prioritize the health of staff, visitors and stakeholders, the WELL Health-Safety Rating can guide you in preparing your spaces for re-entry as you respond to COVID-19.

The WELL Health-Safety seal signifies your visible commitment to supporting the health of individuals in your space.

# WELL Health-Safety Rating

## Checklist

### Cleaning and Sanitization Procedures

- 1. Support Handwashing
- 2. Reduce Surface Contact
- 3. Improve Cleaning Practices
- 4. Select Preferred Cleaning Products

### Emergency Preparedness Programs

- 5. Develop Emergency Preparedness Plan
- 6. Create Business Continuity Plan
- 7. Plan for Healthy Re-Entry
- 8. Provide Emergency Resources
- 9. Bolster Emergency Resilience

### Health Service Resources

- 10. Provide Sick Leave
- 11. Provide Health Benefits
- 12. Support Mental Health Recovery
- 13. Promote Flu Vaccines
- 14. Promote a Smoke-Free Environment



### Air and Water Quality Management

- 15. Assess Ventilation
- 16. Assess and Maintain Air Treatment Systems
- 17. Develop Legionella Management Plan
- 18. Monitor Air and Water Quality
- 19. Manage Mold and Moisture

### Stakeholder Engagement and Communication

- 20. Promote Health and Wellness
- 21. Share Food Inspection Information

### Innovation

- 22. Innovate WELL Health-Safety
- 23. WELL Accredited Professional (WELL AP)



# Heitman Enrolled All Office Assets in US Core Fund

## Why enroll our office assets to WELL?

- We want an external Health-Safety standard to follow
- We are excited about systematically assessing our ventilation and air treatment systems with an external engineering company
- We understand the WELL Health-Safety Rating does not safeguard us against COVID-19, but having enhanced cleaning procedures and air management systems in-place will improve the chances of limiting spread



# Q&A



**Marta Schantz  
(Moderator)**

Senior Vice President  
ULI Greenprint Center for  
Building Performance,  
Urban Land Institute



**Joanna Frank**

President & CEO  
Center for Active Design



**Jessica Cooper**

Chief Commercial  
Office  
International  
WELL Building  
Institute



**Renee Loveland**

Director of  
Sustainability  
Gerding Edlen  
Investment  
Management



**Laura Craft**

Head of Global  
ESG Strategy  
Heitman



# Confronting COVID-19: Healthy Building Certification Updates

Join us in October for virtual Fall Meeting programming

Webinar recording will be posted at  
[knowledge.uli.org](https://knowledge.uli.org)

Link will be emailed to you

Thank you!