



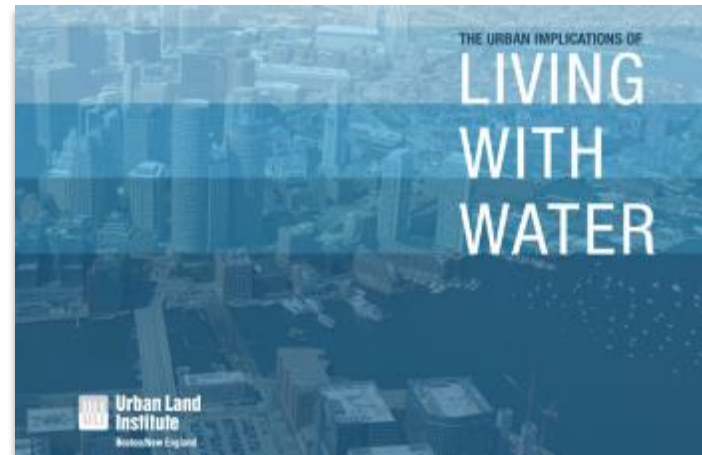
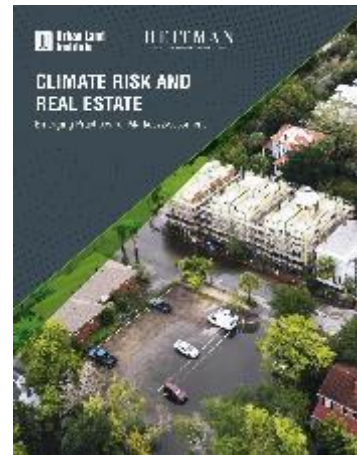
URBAN LAND INSTITUTE

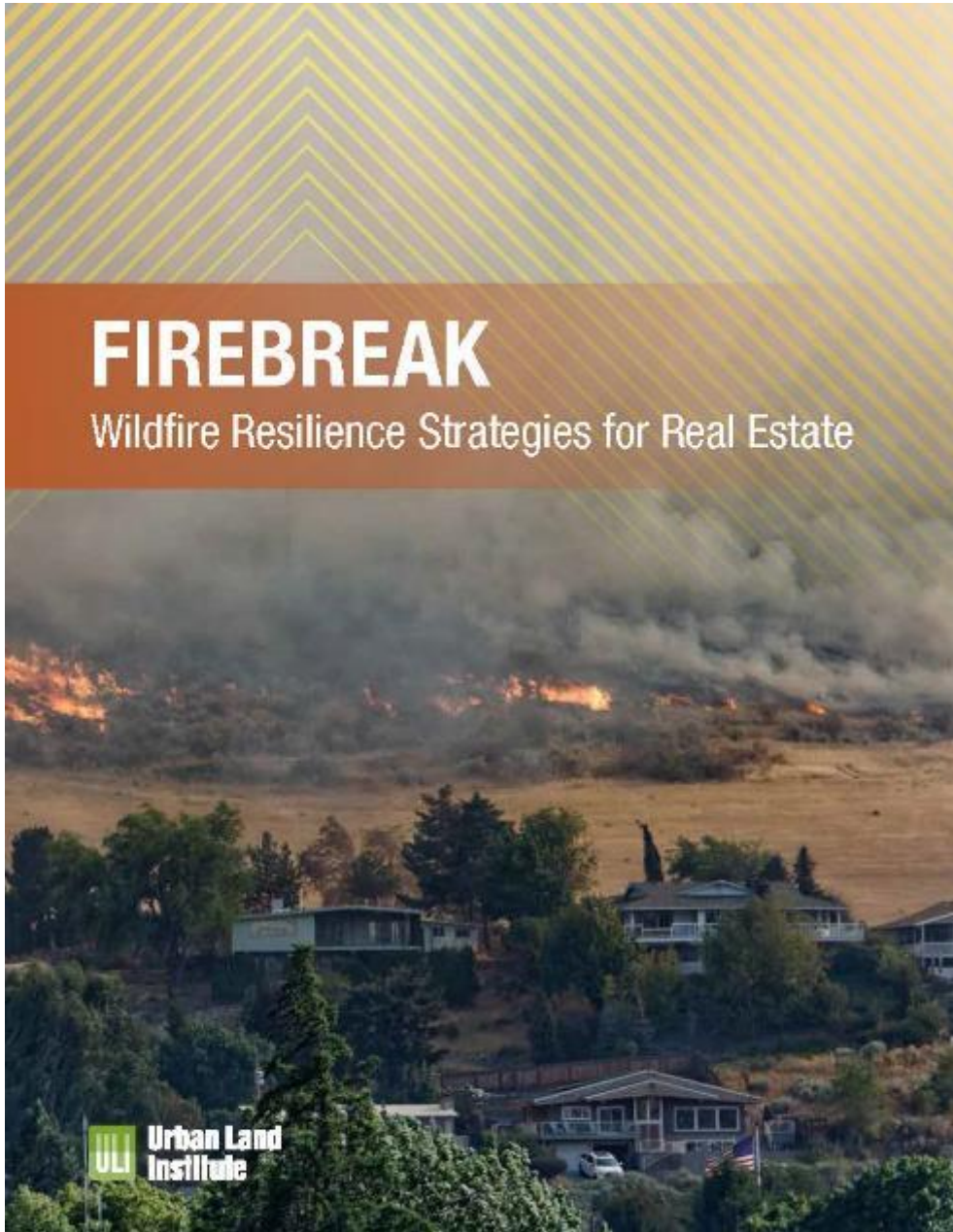
to provide leadership in the responsible use of land and in  
creating and sustaining thriving communities worldwide

# ULI's Urban Resilience Program

Strategizing for buildings, communities, and cities to be more resilient to the impacts of climate change

- Conducting research
- Advising communities through ASPs and TAPs
- Supporting local-level resilience work with ULI's District Council network
- Convening leaders in resilience





# New Report Published Today

## Firebreak: Wildfire Resilience Strategies for Real Estate

- Available at: [uli.org/wildfires](http://uli.org/wildfires)
- The report details:
  - Wildfire risk
  - Community and industry impacts
  - Best practices at the site scale
  - District-scale solutions
  - Case studies in wildfire resilience

ULI is grateful to the Kresge Foundation for its support of the *Firebreak* research and the Urban Resilience Program.

# Today's Speakers



Jose Bodipo-Memba  
Moderator

Sacramento Municipal  
Utility District,  
ULI Sacramento



Molly Mowery  
Speaker

Community Wildfire  
Planning Center



Justice Jones  
Speaker

Austin Fire Department



Larry Florin  
Speaker

Burbank Housing

# 10 Year Wildfires Statistics

National Interagency Fire Center

Year to Date	Number of Fires	Acres
2020	Fires: 47,053	Acres: 8,534,580
2019	Fires: 44,537	Acres: 4,558,859
2018	Fires: 50,753	Acres: 8,236,872
2017	Fires: 52,668	Acres: 8,830,850
2016	Fires: 51,374	Acres: 5,009,217
2015	Fires: 53,710	Acres: 9,408,777
2014	Fires: 42,892	Acres: 3,259,126
2013	Fires: 40,760	Acres: 4,113,305
2012	Fires: 51,314	Acres: 8,967,999
2011	Fires: 63,584	Acres: 8,230,198
2010	Fires: 61,630	Acres: 3,051,757

- 50 active fires
- 3,482,145 active acres on fire
- State with active wildfires:
  - Arizona (4)
  - California (18)
  - Colorado (5)
  - Idaho (8)
  - Montana (4)
  - New Mexico (1)
  - Oregon (3)
  - Utah (3)
  - Washington (2)
  - Wyoming (2)



*Wildfire Resilience: Best Practices in Real Estate and Land Use*  
Molly Mowery, AICP  
Executive Director, Community Wildfire Planning Center

State and national frameworks provide useful minimum standards and consistent policies for fire safe development





Local jurisdictions are critical for advancing land use planning tools to address wildfire vulnerabilities across different community contexts



Voluntary programs are essential for engaging property owners in reducing risk to existing development

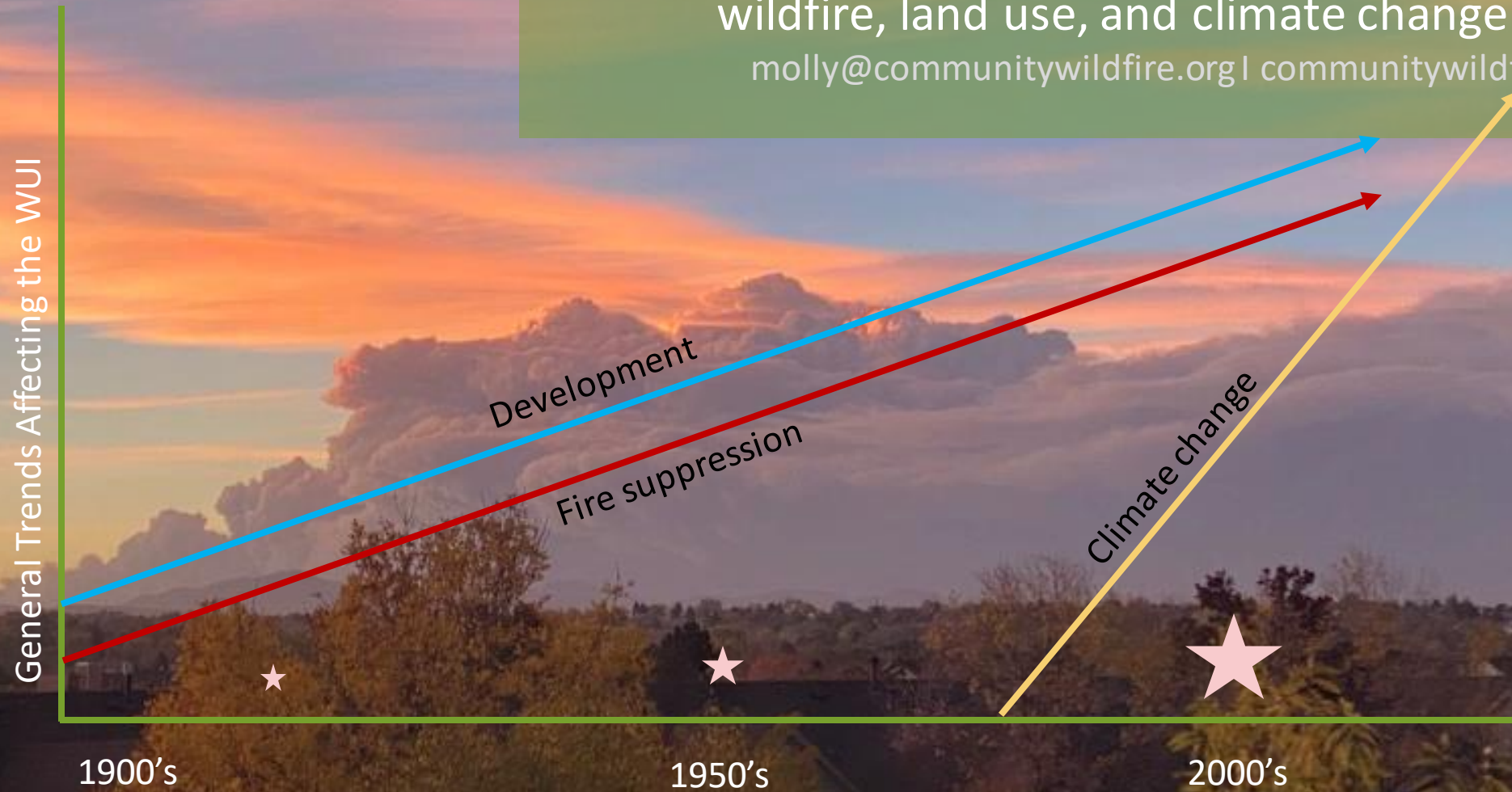


Photo Credit: Scott Condon/The Aspen Times



Photo Credit: Vail Daily

Conclusion: Molly's representation of wildfire, land use, and climate change trends  
molly@communitywildfire.org | communitywildfire.org



★ = Land use tools and related programs making some impacts



# Austin's Cohesive Wildfire Strategy

## From at Risk to Empowered

**JUSTICE JONES**

WILDFIRE MITIGATION OFFICER  
AUSTIN FIRE DEPARTMENT



# Why Austin, Why Now?

## Factors Driving Risk

- Existing Risk, 61% in WUI
- Climate Change
- Population Increase
- Built Environment and Land use



# From at Risk to Empowered

## Three-Tiered Strategy

- Fire Adapted Communities
- Fire Resilient Landscapes
- Effective Response to Wildfires



# Collaboration is the Key

Know Your Role. We All Have One.



Wildfire is Everyone's Fight

---

Larry Florin  
Chief Executive Officer  
Burbank Housing  
October 30, 2020

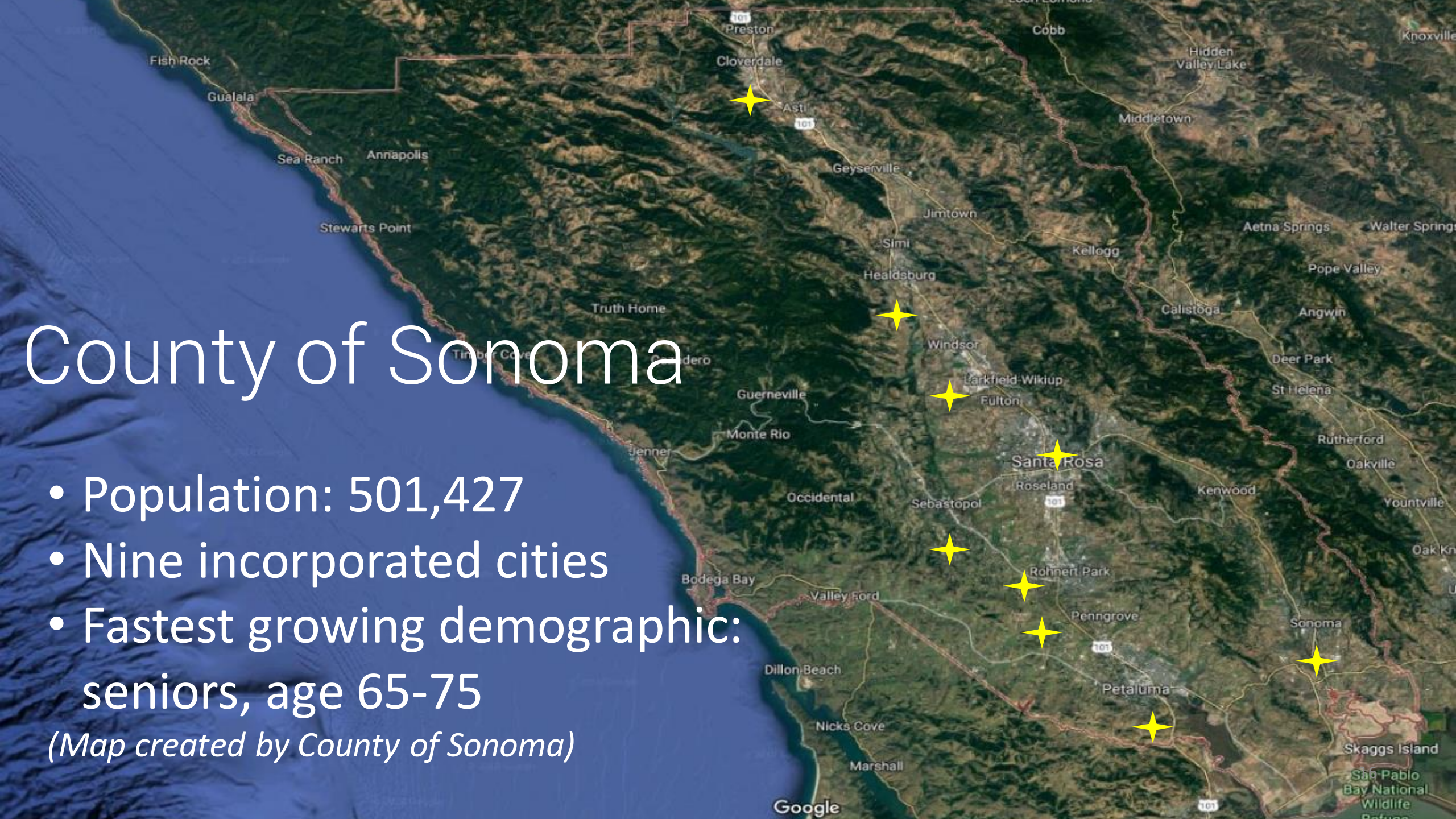


# ULI Presentation

# County of Sonoma

- Population: 501,427
- Nine incorporated cities
- Fastest growing demographic:  
seniors, age 65-75

*(Map created by County of Sonoma)*





# Sonoma County Fires



# Tubbs Fire: California's Most Destructive Fire In History | HuffPost Reports

[https://www.youtube.com/watch?v=GX0  
KTdO7wSo](https://www.youtube.com/watch?v=GX0KTdO7wSo)



*Photo courtesy of County of Sonoma*



*Photo courtesy of County of Sonoma*





Thank you

Larry Florin  
CEO, Burbank Housing

Thank You!

Webinar recording and *Firebreak* report available at:

[knowledge.uli.org](https://knowledge.uli.org)

&

[uli.org/wildfires](https://uli.org/wildfires)

